

---

## Background Color by Company Code

LM-1028

### Overview

This Extended Solution allows a different background color to be established by company code.

### Installation

Before installing this Extended Solution, please verify that the version level(s) printed on the CD label are the same as the version level(s) of the MAS 90 MAS 200 module(s) you are using. For further information, please see the Upgrades and Compatibility section below. Check your Shipping Manifest for a complete list of Extended Solutions shipped.

For detailed installation instructions, please refer to the Sage website at:  
[http://support.sagesoftwareonline.com/mas/extended\\_solutions/main.cfm](http://support.sagesoftwareonline.com/mas/extended_solutions/main.cfm)

### **Installing Your Extended Solutions under Windows From a CD**

If you have the *autorun* function turned on for your PC, the installation program will start up automatically. If not, find the **autorun.exe** file on your CD-ROM drive and double-click it to start the installation program. Follow the on-screen instructions.

### **From the Sage FTP site**

When your Extended Solution is ready to be downloaded, you will receive an email from 'extendedsolutions.na@sage.com' telling you that it is ready. The email will contain the Customer Name, Cross Reference, a case-sensitive Password, a link via which you can download your Extended Solution, instructions, and a Shipping Manifest. If you have any problems with this order, please email [extendedsolutions.na@sage.com](mailto:extendedsolutions.na@sage.com) and we will assist you during normal business hours.

### **Extended Solutions Control Center**

Installing any Extended Solution will add an Extended Solutions Control Center to the MAS 90 MAS 200 Library Master Utilities menu. When you open the Control Center, the following options will be available:

- Extended Solutions Manuals
- Remove Extended Solutions
- Unlock Extended Solutions
- Merge Installation Files
- Extended Solutions Setup options

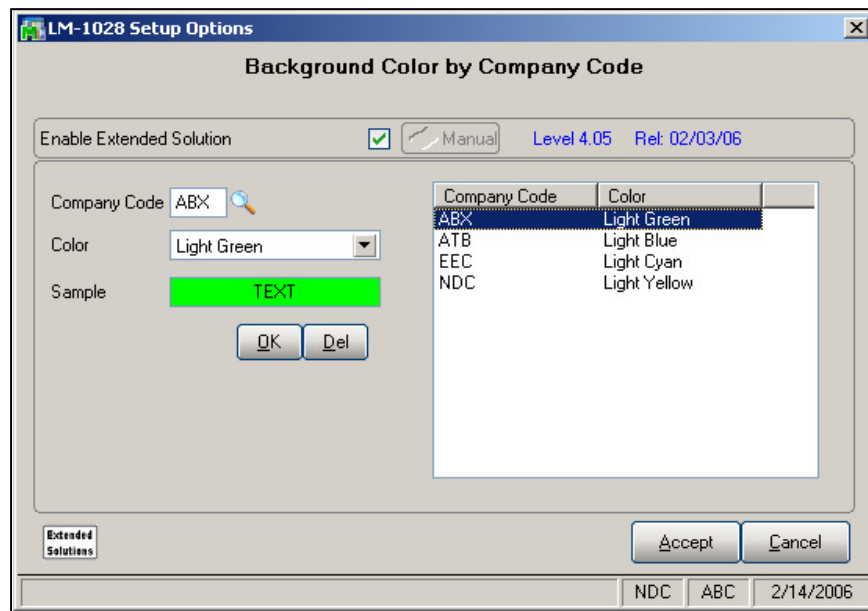
### **Custom Office**

If you customize your MAS 90 MAS 200, then you must run the Update Utility *every time* you install this Extended Solution.

## Extended Solutions

**Setup**

Once the disk is installed, you will need to access the Library Master Setup menu option screen. After the standard MAS 90 MAS 200 option screens have been displayed, a Setup screen for this Extended Solution will appear. Check the 'Enable Extended Solution' box to activate this Extended Solution (Figure 1). The manual for this Extended Solution, if it has been installed, can be viewed by clicking the 'Manual' button next to the 'Enable Extended Solution' check box. It can also be viewed via the Extended Solutions Control Center (see Installation, above).

**Figure 1**

Answer the following prompts:

**COMPANY CODE:** Specify a company code.

**COLOR:** Select a color to correspond with that company code, a sample of the color you chose will display below. Color choices are: Black, White, Dark Red, Dark Green, Dark Yellow, Dark Blue, Dark Magenta, Dark Cyan, Dark Grey, Light Green, Light Yellow, Light Blue, Light Magenta, or Light Cyan.

**OK:** Click 'OK' to accept the color selected for that company code.

**DEL:** Click 'Del' to delete the color record for that company code.

You should visit this Setup screen after each upgrade or reinstallation of this Extended Solution.

## Extended Solutions

**Operation**

This Extended Solution allows you to specify a background color for a company code. Once the color is established in Setup, it becomes the background color within that company code. Screens that are program-generated, such as period end processing in non-business-framework modules, will use the standard gray background. Any company code that does not have a color established will also use the default gray background.

**ODBC Dictionary**

The files listed below have been added, or changed, in the ODBC Dictionaries by this Extended Solution for Crystal Reports purposes.

<i>File:</i>	<i>Fields:</i>
SY_Company	Color_001
SY_CompanyListingWrk	Color_001

Be aware that the ODBC Dictionaries may contain other files and data fields that will be unavailable without their corresponding Extended Solutions installed.

**Upgrades and Compatibility**

The installation CD is labeled with the version of the MAS 90 MAS 200 module for which this Extended Solution was prepared. This Extended Solution will check its compatibility with the appropriate MAS 90 MAS 200 modules and will be disabled if an incompatibility is found. If you upgrade your MAS 90 MAS 200 modules, this Extended Solution must be upgraded as well. Your MAS 90 MAS 200 channel partner can supply this upgrade.

**Documentation**

Only changes made to the standard operation of MAS 90 MAS 200 have been documented in this manual. Operations not documented in this manual are standard procedures of MAS 90 MAS 200 processing. Standard MAS 90 MAS 200 processes, data entry screens, inquiry screens, reports, updates, etc., have not been changed unless addressed in this document.

Parts of this document may refer to the *Specific Purpose Rule*. When referenced, the described feature was developed for a specific client to its specifications and may not conform to generally accepted MAS 90 MAS 200 standards and procedures. These features may or may not benefit you in your application of MAS 90 MAS 200.

**Acknowledgments**

© 2005 Sage Software, Inc. All rights reserved. Sage Software, MAS 90 and MAS 200 are registered trademarks or trademarks of Sage Software, Inc. All other trademarks are the property of their respective owners.